



# SWODA Guidelines

Providing positive direction to SCUBA divers



March 2006 Edition

Next Meeting  
**Monday March 20th, 2006 starting at 8:00 pm**  
Elephant & Castle

### Letter from the President



Putting together trips!  
March is fast approaching and all the Dive Master's are working out dive trips for us. This job, only some of us know all to well, starts long before sign up night where the DM's will come in prepared to give us a snap shot overview of what they have worked out for us for a given date and time. You will find

that we will have our ears and eyes on and open all year round, looking for something new. Whether it is a new shipwreck or new dive destination that we have not gone to or our club has yet experienced, we are trying to keep our schedule existing and fresh. Don't forget we have our favorites too. There some dive destinations that are always fun and popular, so if you see some of these trips on the calendar that interest you, don't wait until sign up night or you may miss out on the good thing. Be sure to come out to the March meeting to see what this years dive schedule has to offer. Don't hesitate to call or email any of the dive masters if you are looking to get on a certain trip, especially if you can't come that night. We are also looking for suggestions for dive weekends or destination from you!

### Winner of our 50/50 draw



### Congratulations too!



January Winner  
**Dave Grassy- \$17.50**



February's Winner  
**Glenn Metcalfe -\$17.00**



### Letter from the President. continued

So if you know of places or wrecks you would like us to run a dive trip to, please don't hesitate to contact us and ask us to try and do so. We don't want to let anyone down and are always looking to improve the dive schedule. See you at sign up night!

### Next Pool Time



We have had another great pool opportunity with some weather against us but some divers out none the less. Pool time was shared by some snorkelers, divers and swimmers alike. We will again be at the

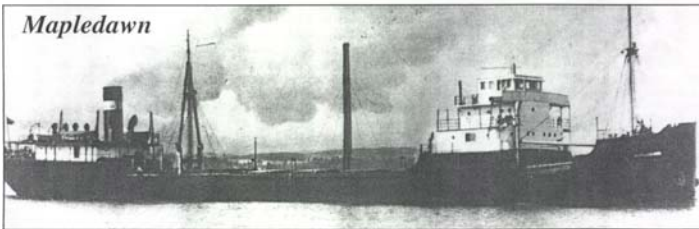
**Bob Hayward YMCA**  
Hamilton Rd .  
**March -26th - 3.30 till 4.30.**

Hope to see you out.  
Please contact or to confirm your coming.  
Patrick Briscoe - 453-5221  
Craig McCullough- cmcculloch14@hotmail.com

## Wreck of the Month

The Mapledawn & the Manola.

The wreck of the Mapledawn lies in a depth of 30-50 ft of water and is a delight to dive and is great for new divers. On the northwest side of Christian Island the steel freighter, the Mapledawn actually started her life as the Manola, When she was launched at Cleveland in 1890 . as the Manola she had sank in lake Ontario. The a new bow half was constructed for the Manola's orphaned stern half, then resulting in the new name of the ship as the Mapledawn. Although lives were lost in the original sinking in lake Ontario, none were lost, when the Mapledawn loaded with barley, stranded in a blinding snow storm on



November 30th 1924. Some machinery was salvaged at the time, but more of this wreck was recovered for it's metal during a time of need in World War 2. Now what is still left to dive on is great. Wreckage includes the winch, chains, engines, gigantic boilers and the propellers are in 30ft of water. The water around the stern gets to be about 50ft. This is a great dive site for photographers. Great visibility with really good natural lighting and lots of fish. This site is not a shore dive, to get out to see this wreck one needs to get to the Penetanguishene area.

## Dues are Due

March meeting is coming real soon. We are making this your friendly reminder to get your dues in. Please feel free to join us at our club meeting, it's a privilege of membership. We need you to pay your dues because the more members we have the better we can serve you. With a strong membership base, our Dive Masters can tailor dives to suit the varying levels of divers as our club grows, which means more and better diving for everyone!

### S.W.O.D.A. 2006 Membership Options:

Early Bird Renewal \$40 ( Before March meeting)  
\$ 45 Single– After

**Early Bird Renewal \$64 ( Before March meeting)**  
\$ 69 family– After

\$ 10 Newsletter Only (Friends Of SWODA)

\$25 Introductory Offer for New Members

We are planning to send the unpaid members a letter to give them the heads up on this there last news letter they will receive..

*Price is what you pay, Value is what you get!*

## Wreck of the Month..... continued

Mapledawn was 349 ft long 40 ft wide. Hear is a great picture of her large prop. As the Manola she was 282 ft on and 40'3 wide. Manola lies in Lake Ontario and is also a great dive site. You would need to get out with Duck Dive at Point Travis. The Manola's front half of this steel steamer foundered in a storm while under tow on December 3, 1918. Built in 1890, both sections of her hull were on route to Montreal to be



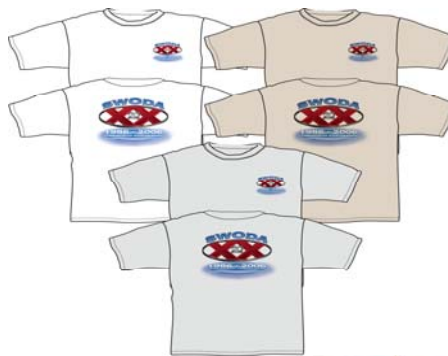
rejoined for World War I service. Eleven lives were lost. The bow section lies upside down in 40'-80' of water on the rocky floor of Lake Ontario.



## SWODA WEAR

2006 has some new SWODA wear coming. Our Steve Brandow is your guy with the smart SWODA ware. Steve and Sean from Tommy White in St Thomas Ontario are really coming up with great options this year.

Steve can get SWODA wear with our logo on almost anything. You will see some members sporting our club logo on there dry suit underwear. So come out to our next meeting to see what's new in SWODA wear this year. Don't hesitate to ask for something new:



Contact:  
Steve & Cathy  
contact them at:  
773-5143 or email:  
cbrandow@lear.com



Newsletter submissions may be e-mailed to:  
mar@divewithmar.on.ca or cmcculloch14@hotmail.com

**Season Opener**

Well are you ready for some diving? The clubs Season Opener and BBQ is fast approaching. The whole gang will be there with their guppies. We are getting ready with burgers, dogs and soda pops and lots of games galore.

May 28th is the day and around 11ish is the start time. The location is not carved in stone yet because a lot of our favorite dive site for season opener is no longer allowing diving activities at St Mary's, so we are still debating the where. We will keep you all posted. If you have favorite spot or would like to try a new one that you're hears of, the events team would love to hear from you. Call or email.

**Events Team:**

Phil Shelley-637-3642  
[thephilguy@porchlight.ca](mailto:thephilguy@porchlight.ca)  
 Kathy Brandow-773-5143  
[cbrandow@lear.com](mailto:cbrandow@lear.com)



**Decals Coming**

Some of us may remember and even have these diving sharks. The Happy Shark for your vehicle and it is a dive flag too. We are getting these again, so if your are interested in getting one please let us know and we will put in an order.

Phil Shelley  
 637-3642  
[thephilguy@porchlight.ca](mailto:thephilguy@porchlight.ca)



**SWODA Executive 2006**



**SWODA Executive**

Position	Name	Phone Number
President	Marlyn Smith	672-3100
Vice-President	Craig McCullough	cmcculloch14@hotmail.com
Treasurer	Patrick Briscoe	453-5221
Secretary	Stephen Du Charme	227-0272
Webmaster	Luigi DiRaimo	641-7754
Newsletter Editor	Craig McCullough Marlyn Smith	637-7712 672-3100
Promotions	Steve Brandow	773-5143
Events Team	Phil Shelley	637-3642
Events Team	Kathy Brandow	773-5143

**The Gear Bin**

- 1 ladies wet suit, small – like new, back & pink trim  
 Mar – E-Mail [mar@divewithmar.on.ca](mailto:mar@divewithmar.on.ca)
- L-XL Neoprene dry suit. 170-190 pds.  
 Dan Varewyck- (519) 686-8208
- XL - BCD. US Diver Cousteau - like new.  
 Dany Jacques- (519) 660-9708
- 1 Viking Dry suit - 10 dives on it. Men's medium  
 Doug Hazen– call 485-2115

**Looking for used Gear!**

Please inform us of your progress so we can keep this column current. If you're not using your gear or wanting to up grade, keep watching this column for dive gear you might be after.



**Club Diving Level Explanation**

Level	Description
1	Maximum depth 60 feet. No special conditions
2	Maximum depth 90 feet. No special conditions
2	Maximum depth 60 feet. Special conditions such as strong current or night dive
3	Maximum depth 130 feet. No special conditions
3	Maximum depth 90 feet. Special conditions such as strong current or night dive
4	Overhead environment, (i.e. wreck penetration, ice, cave or extended range, special gas mixtures, i.e. Trimix

## SWODA Dives and Events Schedule 2006

DATE	EVENT	LOCATION	LEVEL	CONTACT	PHONE
March 5-12th	SWODA went south	Bonaire, N.A.	1-3	Marlyn Smith	672-3100
<b>March 20th</b>	Club Meeting Trip sign up night!	Elephant & Castle	Everyone	Marlyn Smith	672-3100 mar@divewithmar.on.ca
March -26th	Pool Time	Bob Hayward-YMCA Hamilton RD	Everyone	Patrick Briscoe	pbriscoe@rogers.com 453-5221
April 10th	Club Meeting	TBA	Everyone	Marlyn Smith	672-3100 mar@divewithmar.on.ca
April -TBA	Pool Night	To Be Confirmed by next newsletter	Everyone	Patrick Briscoe	pbriscoe@rogers.com 453-5221
April- TBA	Bonne Terre Mine	St Lewis. Missouri	Everyone	Marlyn Smith	672-3100 mar@divewithmar.on.ca
May 13– 14th	Gilboa Quarry Dive Spring dip!	Finley Ohio	Everyone	Marlyn Smith Ann Wilson	672-3100 mar@divewithmar.on.ca
May 28th	Season Opener	TBA	Everyone	Phil Shelley	thephilguy@porchlight.ca (519) 637-3642
June-TBA	“Wexford” Shipwreck from the 1913	Grand Bend	1-2	Marlyn Smith Patrick Briscoe	672-3100 453-5221
June 10-11	River Drifting/ Boat dives	Fort Erie	2-3	Marlyn Smith	672-3100 mar@divewithmar.on.ca
July 8-9	Alpena	Alpena Michigan	1-2	Ron Sisson	681-4446 <a href="mailto:ronsisson@rogers.com">ronsisson@rogers.com</a>
July TBA	Wreck Dives	Lexington MI	2-3	Luigi DiRaimo	641-7754 ouigian@sympatico.ca
July- TBA	Upper Peninsula (U.P. Diving)	Straits Of Mackinaw	2-3	Marlyn Smith	672-3100 mar@divewithmar.on.ca
July –TBA	Shore Dives Wreck Dives	Tobermory	1-2-3	Marlyn Smith Ann Wilson Patrick Briscoe	672-3100 mar@divewithmar.on.ca
August 26-27	Wreck Dives	Kingston	2-3	Ron Sisson Steve Barnes	681-4446 <a href="mailto:ronsisson@rogers.com">ronsisson@rogers.com</a>
Sept- 8-10	Brockville 2 day dive trip	Brockville	1-2-3	Marlyn Smith	672-3100 mar@divewithmar.on.ca
Sept- 16	<b>SWODA “20” Anniversary party!!</b>	Dave and Mar’s	Everyone	Marlyn Smith	672-3100 mar@divewithmar.on.ca
October –TBA	Pumpkin Carving	Sarnia	Everyone	Marlyn Smith	672-3100 mar@divewithmar.on.ca

We will not putting in all the meeting date or the “Run to the river dives” dates do to lack of space.  
 We will put in meeting date Two mouths ahead and will put in river dives when we get closer to dive season.

This schedule may change as the season comes closer. If Dive Masters do not get commitment or interest on promoted trips.  
 This will bring changes to our coming dives and events calendar. Please contact the DM running the trip or event so  
 we can plan great things for *Your Dive Season!* Help us help you!

**Come out to hear and see what’s new for this years dive schedule.  
 March 20th 2006**

Newsletter submissions may be e-mailed to:  
 mar@divewithmar.on.ca or cmcculloch14@hotmail.com

All users are required to sign a standard release of liability in order to participate in Club SWODA dive activities.  
 A copy of the release may be obtained from the executive for your review.

## Other Non-Club Dives and Events In our Area

THIS CHART WILL BE TO KEEP OUR MEMBERS INFORMED OF OTHER DIVE RELATED EVENTS

DATE	EVENT	LOCATION	CONTACT
March 11	Ice Flow races	Peterborough	<a href="http://www.underwatercouncil.com/ice_flow_race.htm">http://www.underwatercouncil.com/ice_flow_race.htm</a>
March 18	North American Shipwreck and Dive Show	West Bloomfield, Michigan U.S.A.	<a href="http://www.shipwreckshow.com">www.shipwreckshow.com</a> SWODA's Terri Irvine will be presenting!
March 25th	Ship Wrecks 2006	Welland	<a href="http://www.vaxxine.com/nda/">http://www.vaxxine.com/nda/</a> Our Randall McDonald & Andy Donato will be presenting
March 24-25th	Ghost Ships Festival	Milwaukee Wi	<a href="http://www.ghost-ships.org">www.ghost-ships.org</a>
April 7th	Atlantic	London	<a href="http://www.uwo.ca/museum/events">http://www.uwo.ca/museum/events</a>
June 17-18	Treasure Hunt	Pesqu'ile Ontario	<a href="http://www.underwatercouncil.com">http://www.underwatercouncil.com</a>

### SWODA Meetings

For the March meeting, meet us at the **Elephant & Castle in the Galleria Mall at 8:00 pm on March 20th**. We are looking to move our meeting place and even changing up some of our venue in the early spring. So please come out to the March meeting or make sure you read your newsletters, as we will update everyone as soon as these changes take place. Please keep us updated to any changes with you too. Notify us in your renewal for 2006 with any changes to your contact information.

### Bonaire or Bust!



### Birthdays Corner

#### March:

Steven Du Charme– Mar 3  
 Sheila Barker– Mar 4  
 Randall McDonald– Mar 17  
 Marlyn Smith– Mar 18  
 Mike Parsons– Mar 18

### In the Lime Light

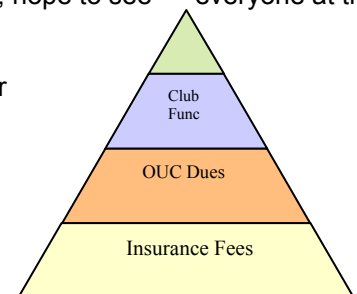
At our February meeting we had a presentation by Mar sharing "Reflections of the Yucatan" with us. This month we have Mar bringing us "Bonaire or Bust"! Mar and the gang who will have just come home from Bonaire will be sharing pictures from the SWODA 2006 Bonaire trip to the A.B.C Dutch Antilles. This will be a collection of both above and below the water photo's, as well as ocean and cave dives. So come out and see this presentation as it will be a real treat!



### Treasurer's Report– Continued

The new executive is trying hard to increase the club's membership so that we can enjoy all of the benefits that come with new scuba buddies, so feel free to spread the word about our club. We guarantee that we will try our hardest to get you the most out of your membership this year. Have a great month; hope to see everyone at the next meeting!

Patrick Briscoe- Treasurer



Newsletter submissions may be e-mailed to:

[mar@divewithmar.on.ca](mailto:mar@divewithmar.on.ca) or [cmcculloch14@hotmail.com](mailto:cmcculloch14@hotmail.com)

All users are required to sign a standard release of liability in order to participate in Club SWODA dive activities.  
 A copy of the release may be obtained from the executive for your review.